

VIEW FROM THE HILL

OFFICIAL NEWSLETTER OF
KINGS HILL PARISH COUNCIL



Message From The Chairman

I would like to take this opportunity to extend my best wishes for a Merry Christmas and a peaceful, healthy and prosperous New Year to all. I've been happy to continue in my role as Chairman over the past year, it has been a privilege to have attended a range of engagements with community groups, local charities and businesses. I'd like to take this opportunity to reassure you all that everyone at Kings Hill Parish Council will continue to do everything in their power to attract investment into our community and make Kings Hill an even stronger and better place to live and work.

Before closing, we should not forget to care for those less fortunate than ourselves, if you are able to donate food, please contact Kings Hill Foodbank to offer your support. We should also extend our gratitude to those who will be working over the Christmas period who keep our utilities running.

On behalf of all the Parish Councillors and staff, I would like to wish you all a very enjoyable and safe Christmas and hope that 2025 will be a brighter, positive and healthier one for us all.



DECEMBER 2024



KHPC AGAR 2023/2024

The Parish Council would like to inform residents that the 2023/2024 external audit has been concluded and published on our website. The external auditor concluded that:

"On the basis of our review of Sections 1 and 2 of the Annual Governance and Accountability Return, in our opinion the information in Sections 1 and 2 of the Annual Governance and Accountability Return is in accordance with Proper Practices and no other matters have come to our attention giving cause for concern that relevant legislation and regulatory requirements have not been met."



JOIN OUR MAILING LIST

Make sure you don't miss a thing. We'll keep you in the loop via email about our events, competitions and latest news. To sign up to our mailing list, visit our website and head to the 'news' section!



www.kingshillparish.gov.uk

NEW AT THE KINGS HILL COMMUNITY CENTRE



RECENT UPGRADES

The Parish Council Team has been working hard to help improve the facilities offered here at the Kings Hill Community Centre. We have recently upgraded our tables and purchased more banquet chairs to supply in our Townsend and Jim Fry Hall. The team has also purchased more chair covers and table cloths which are available to hire for your bookings as well as laying fresh new carpets in both our Braham and Gibson Suites. The Community Centre team will continue to strive to offer the best service, facilities and experience for all customers.

CUNNINGHAM ROOM RE-OPENING

The Cunningham room has re-opened and is available for one-off bookings. This hall is completely self contained which includes its own kitchenette, crockery and private toilets. The hall is perfect for children's birthday parties, christenings and intimate get togethers. The hall is charged at the following rates, peak - £46.75 per hour, Off Peak - £33.00 per hour, Party Rates (After 6:00pm) - £58.25 per hour.



PARTY PACKAGES

BRONZE

HALL HIRE FOR DESIRED HOURS
MAX 120 GUESTS

SILVER

HALL HIRE UP TO 7 HOURS
CARETAKER SERVICE
CLEANING SERVICE
MAX 120 GUESTS

GOLD

HIRE UP TO 7 HOURS
CARETAKER SERVICE
CLEANING SERVICE
TABLECLOTHS
CHAIR COVERS
PA SYSTEM
MAX 120 GUESTS

PEAK RATE BY ROOM
£58.25 HOURLY
(AFTER 6PM)

NO BAR - £600
BAR INCLUDED - £850

NO BAR - £900
BAR INCLUDED - £1250

BOOK NOW!

NEW PARTY PACKAGES

The Community Centre has exciting new party packages on offer for all customers booking with us. These packages give you an integrated experience which caters to all of your party needs at a reasonable cost! The packages range in price depending on what is on offer and needed for each individual party. To book one of our halls today for your next event, contact us on the email below. For more information, please visit our website www.kingshillcommunitycentre.org.uk.



bookings@kingshillparish.gov.uk

PARISH COUNCIL NEWS



BUS SERVICES IN KINGS HILL

There has been some confusion about bus services in Kings Hill. To make it easier for residents to access the bus timetable information, please find below links to timetables of bus services to and from Kings Hill:

www.nu-venture.co.uk

<https://www.arrivabus.co.uk/find-a-service>

bustimes.org/localities/kings-hill-kent

AROUND THE WORLD IN EIGHTY RECIPES

Autumn, and the storms and pests are forgotten as we make it over the seasonal finishing line with an abundance of glorious fruit and veg. Our international community has also blossomed this year and we now have representatives from all over the globe. It is not only great to learn about all the various cultures, but it also means we get to see and try some different and exciting produce too. Allotment life just keeps on giving.

Author, Allotment Representative



MACMILLAN COFFEE AND CAKE

The Kings Hill Parish Council hosted another successful Macmillan Coffee and Cake fundraising afternoon on the 30th September 2024 at the Kings Hill Community Centre. We would like to take this opportunity to thank those who came, donated cakes and donated money to this amazing charity. I would like to say another big thank you to Lisa, My Pretty Vintage Party, who kindly donated her vintage china on the day. We raised a total of £89.70 which has been donated to the Macmillan Charity.



BORROW A THERMAL IMAGING CAMERA

Thermal imaging cameras are easy to use, like other digital cameras. They use colour images to show where your home is losing energy.

Using the camera can help to identify where to improve insulation, block draughts, and save on energy bills and keep warm! Parishes, community groups and residents located in the borough can now borrow a thermal imaging camera from the Council for free!

Further information and the booking form are at www.tmbc.gov.uk/thermal-camera

DATES FOR THE DIARY

Christmas Story Time - Sports Park

Tue 17 Dec - 10:00am - 11:30am

Freddie Mercury 3 Course Dinner - Kings Hill Music

Sun 22 Dec - 8:00pm

Avanzi Night & Buffet - Kings Hill Music

Tue 31 Dec - 7:30pm

VE Day Event - Parish Council

Date & Time TBC

Monthly Meeting- Kings Hill WI

Every 4th Wednesday of the month - 7:30pm

Community Club - KHPC

Every Monday - 1:00pm - 3:00pm

Walking Football - Sports Park

Weekly Fridays - 11:00am - 12:00pm



MOBILE PHONE MAST - APPROVED

Tonbridge and Malling Borough Council has given planning approval for the instillation of a new 25m high telecommunication lattice tower with headframe, supporting antennas and transmission dishes plus ground-based equipment cabinets with a secure fenced compound and ancillary development thereto at Kings Hill Golf Club.



REMEMBRANCE SUNDAY

A congregation of at last 800 people gathered at the Running Airman War Memorial on 10 November 2024 for the Annual Remembrance Service. We were joined on the day by Mrs Nadra Ahmed OBE DL representing the Lord Lieutenant of Kent and Mr Christopher Brown Deputy Mayor of Tonbridge and Malling. The Remembrance Service was led by Rev Mark Montgomery, St Gabriel's Kings Hill followed by Wreath-Laying. Thank you all for attending.

2024 PLAY INSPECTIONS

The annual safety inspections of the play equipment at Anson Avenue and the Sports Park have recently been carried out. We are delighted to inform residents that the play equipment was assessed as safe for all to enjoy.



REPORTING A PROBLEM - NON URGENT ISSUES

You can report non-urgent issues online to Kent County Council which include street light faults, potholes, drainage, traffic signal faults, damage to bus stops (poles/timetables), overgrown vegetation (including hedges and grass) or information about roadworks. To report any current issues you may have, click the link below: <https://www.kent.gov.uk/roads-and-travel/report-a-problem>

CHRISTMAS SERVICES

St Gabriel's Kings Hill, your church worshipping at the heart of Kings Hill for 20 years, has a range of services for all ages to celebrate Christmas.

Valley Invicta Primary School - **Sunday 15th December**
4:00pm - Carols by Candlelight
Christmas Carols and Jumpers a service for all.

Discovery School - **Christmas Eve**
2:00pm & 4:00pm Messy Nativity and Christingle
Christmas craft activities followed by a 'scratch' Nativity and Christingle service.
Booking Essential via our website

Discovery School - **Christmas Eve**
11.15pm - Midnight Communion
A calm, peaceful way to bring in Christmas with Carols and Communion

Christmas Day Family Communion - **Christmas Day**
10:00am with the Bishop of Tonbridge
A lively family communion service the traditional way to start Christmas Day.



VOLUNTEERS WANTED

Volunteer with us and help us deliver outstanding care to our patients. Our volunteers are an integral part of the MTW team, making a real difference to our patients and supporting our staff in so many ways.

WHO DO WE NEED?

We are looking for volunteers to help at Maidstone Hospital and Tunbridge Wells Hospital.

WHAT DO WE NEED?

The roles include meeting and greeting patients and visitors; supporting our Chaplaincy team; helping our Macmillan Cancer Support team; befriending; gardening; admin support and so much more.

HOW DO I SIGN UP?

Drop the team an email via mtw-tr.volunteers@nhs.net or call us on 01622 224719. Want to find out more? Visit: www.mtw.nhs.uk/get-involved/volunteering

WANT TO FIND OUT MORE?

Visit: www.mtw.nhs.uk/get-involved/volunteering



SANTA IS COMING TO KINGS HILL THIS DECEMBER

DOOR TO DOOR - SANTA SLEIGH

On Sunday 15th December 2024, Santa and his helpers will be making their way around Kings Hill, door to door between 4:30pm - 7:30pm. The door to door service will be starting at Goldings Close, along to Discovery Drive, to Worcester Avenue, Pippin Way and ending in Victoria Drive.

SEMI - STATIC SANTA SLEIGH

There will be a semi-static sleigh on the 20th December 2024 around Ruton Square, between the Rolex building and Park Drive. This will be between 6:00pm - 7:30pm.



SANTA CLAUS IS COMING TO SCHOOLS

Santa's sleigh will also be making an appearance in the areas around Kings Hill School and Discovery School, accompanied by Kings Hill and Mereworth Scouts, on other weekend dates in December - these dates still need to be finalised so to keep up to date please visit our facebook page: <https://facebook.com/RotaryKingsHill>

Author, Kings Hill Rotary Club

HAVE YOUR SAY...

We're inviting people across Kent and Medway to have their say on our approach to measuring incident response times. We also want residents/businesses to comment on how much they're prepared to pay for the services we provide through their Council Tax. Visit <https://www.kent.fire-uk.org/creating-safer-future-together-public-consultation-2024> to have your say now.

Author, Kent Fire and Rescue Service

ROMANCE FRAUD IN KENT

A romance scam is an insidious confidence trick. Fraudsters create fake profiles on dating sites or social media to establish a relationship with someone, with the aim of taking their money. In 2023 Victim Support had contact with 140 victims of romance fraud in Kent, however we believe the real number of people affected is much higher than statistics suggest, as so few victims tell anyone.

Being targeted by a romance fraudster does not mean a victim is gullible or naïve. Such scams are prolific and increasingly run by criminal organisations, practiced experts at psychological manipulation. Fraudsters typically spend weeks or months establishing what appears to be a genuine, caring relationship. Eventually, they begin to ask for money or personal information under various pretexts, such as medical emergencies or financial troubles. By the time the victim realises they have been scammed, they may have lost significant amounts of money. British victims of romance fraud lost over £92 million in 2023, with an average loss of £11,500 each.



The Fraud Peer Support Pilot Service at Victim Support (0303 313 2955) offers tailored support to victims of relationship fraud throughout Kent, providing one-to-one casework, a group work programme and peer support sessions. Working closely with Kent Police and other partners, the aim is to disrupt the actions of fraudsters and reduce the risk of re-victimisation.

CHRISTMAS TREE RECYCLING

Let us collect and recycle your real Christmas tree in exchange for a donation (£15 suggested donation to Heart of Kent Hospice). Your Christmas tree will be collected between Friday 3rd - Sunday 5th January 2025.

We will be collecting trees in ME5 9, ME6 5, ME14, ME15, ME16, ME17 3, ME17 4, ME18, ME19, ME20, TN12 5, TN15 7, TN15 8, TN15 9, Burham, Wouldham, Shipbourne, Plaxtol and Hadlow. All trees must be booked for recycling before Tuesday 31st December 2024. For further information visit hokh.org



MEETING DATES

Full Council

16 JAN 2025, 19.30h

20 FEB 2025, 19.30h

Kings Hill Community Centre

Jim Fry Hall

Planning & Transport

02 JAN 2025, 18.00h

06 FEB 2025, 18.00h

Kings Hill Community Centre

Venue TBC

Climate Change & Environment

02 JAN 2025, 18.00h

06 MAR 2025, 18.00h

Kings Hill Community Centre

Venue TBC

Finance Committee

03 APR 2025, 19.00h

Kings Hill Community Centre

Venue TBC

Sports Park Committee

Dates to be confirmed

HELLO FROM YOUR NEW NEIGHBOURS, ELEANOR LIVE-WELL!



We have recently moved into our offices in Kings Hill and are very much enjoying getting to know the area and all that it has to offer. Eleanor Live-Well is part of the Eleanor Healthcare Group, which has been delivering a wide range of care services across the UK for over 45 years. Live-Well was established within the Eleanor Group to focus specifically on providing live-in care. Comprised of a team of consultants with a combined

experience of 70 years in the live-in care industry, and supported by a large group of loyal, highly professional and DBS-checked carers, we are well-placed to offer a truly professional service.

We can provide live-in care to clients who require anything from just a few days' post operative care to those who might need care on an ongoing basis. Or if you are looking after a loved one and need some respite cover for a week or two, we can help with this too. Our carers can help with shopping and housekeeping, assist with personal care, or support clients with more complex conditions such as dementia or Parkinson's. All in the comfort of their own home.

Although we are based in Kings Hill, we offer a nationwide service, so if you know of anyone who might require our help outside the Kings Hill area, we would be happy to help. We hope to meet you at some of the Kings Hill events lined up over the next year. Please do contact us on 01732 441877 for a chat - whether to talk about what we offer or just to recommend the best coffee shops and prettiest walks in the area!

The View from The Hill is the Quarterly newsletter from the **Kings Hill Parish Council**. If you have any comments about the articles in this edition of The View from the Hill or wish to give us any other comments you may have on any Parish Council matter, please write to: The Office/ Finance Manager, Kings Hill Parish Council, Kings Hill Community Centre, 70 Gibson Drive, Kings Hill ME19 4LG. Alternatively please contact us on **01732 870382** or email **administration@kingshillparish.gov.uk**

Compiled and edited by the **Kings Hill Parish Council and Office / Finance Manager**
Designed and produced by the **Office / Finance Manager**
Printed and Distributed by **The Net Magazine**

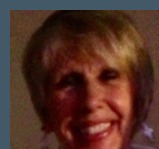
YOUR COUNCILLORS



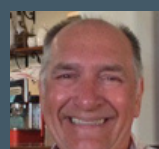
Anthony Petty
Chairman



Mike Hartman
Vice Chairman



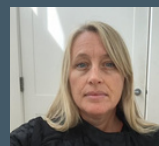
Margaret Colman
Parish Councillor



Neil Sherlaw
Parish Councillor



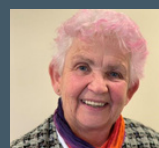
Angela Vincent
Parish Councillor



Siobhan Kirk
Parish Councillor



Felix McIlymont
Parish Councillor



Sarah Barker
Parish Councillor



James Mackay
Parish Councillor



David Rush
Parish Councillor